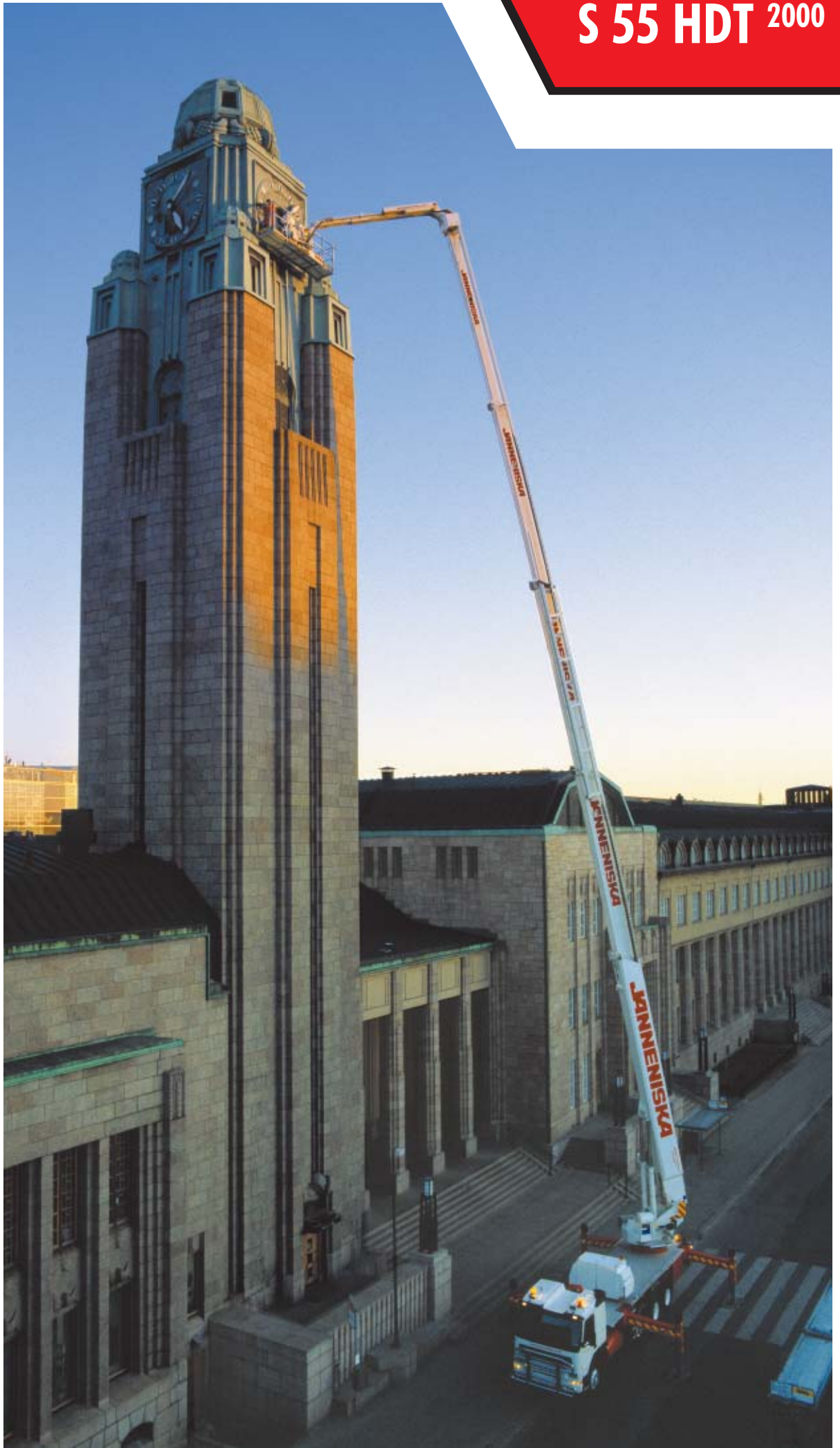
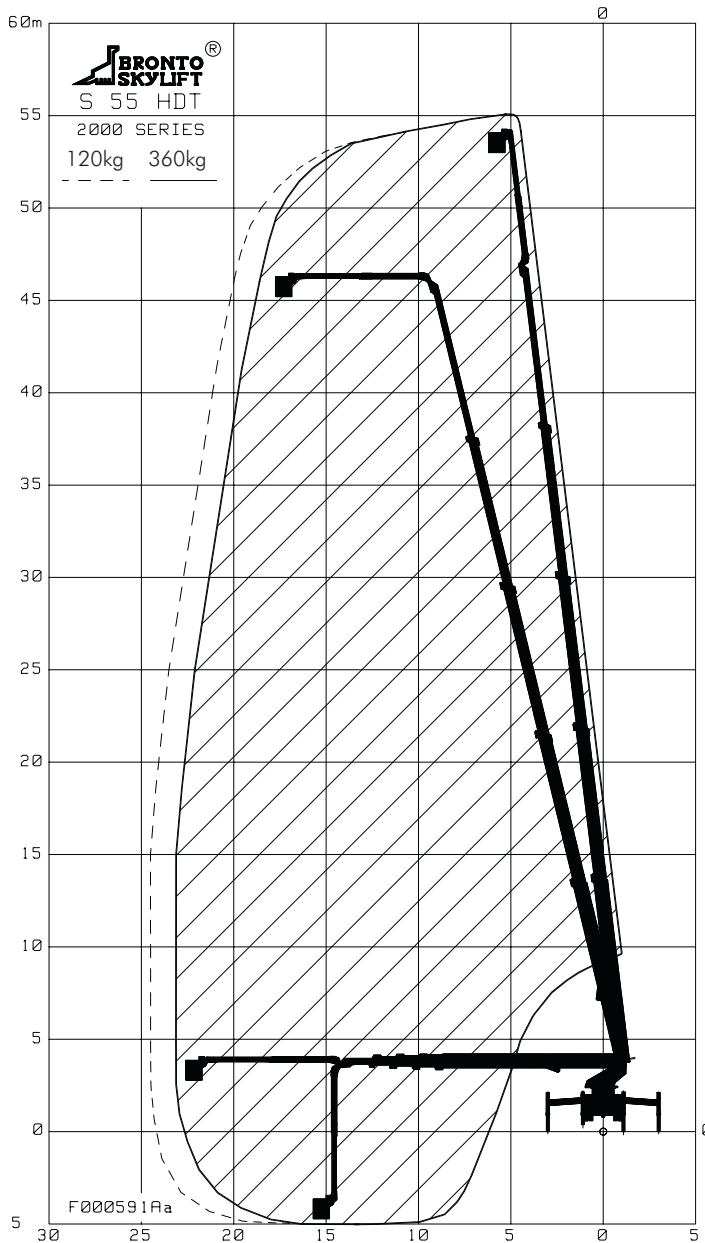




JANNENISKA

S 55 HDT 2000





Features

Working cage

Wide working cage - turning sector ~ 170 degrees. The working cage can be extended up to 3,8 meters. The maximum working cage load is 360 kg.

Electricity (230V/400V), water and air (max. 200 bar) are also available in the working cage. The electricity can be produced by the machine's own 6,5 kW generator.

The working cage is also equipped with working light and radio. The control unit can be freely positioned anywhere in the working cage to achieve optimum space to work.

Driver



The driver operates the machine and assists the customer with the task. If needed, the driver can operate the machine also from the lower control center. In that case there is an intercom connection between the lower control center and the work cage.

One-sided driving

This enables stabilization of the machine by spreading only the stabilizers in the working area.

Electric use

The machine can also be driven with electricity only, to avoid noise and exhaust gases. For this reason the machine can safely and silently be used indoors.

Silent pack

The hoisting machine is driven by a separate engine, the Silent Pack, which is much more silent and reliable than the truck's engine and produces much less emissions.

Telescopic cage boom

Telescopic cage boom is adjustable according to the work environment.

Technical specifications

Working height	55,0 m
Height to working cage floor	53,0 m
Working outreach	23,4 m / 24,7 m
Safe working load	360 kg / 120 kg
Rotation	Continuous
Transport height	3,9 m
Transport length	12,8 m

Transport width	2,5 m
Outrigger width / length	
-Normal	6,8 m / 7,7 m
-One-sided	4,65 m / 7,7 m
Working cage	2,4/3,8(W) x 0,9(D) x 1,1(H)m
Total gross weight	32000 kg
Max. point load	~21500 kg (215 kN)